

ELECTRIC GRIDDLE WITH SMOOTH PLATE TOP VERSION

Project:
Rev.:
Zone:
Location:



CODE
CR1013989

MODEL
Q70FT/E600

SERIE
QUEEN 7

GENERAL FEATURES

- 15/10 worktop thickness
- Stainless steel, Scotch-Brite finish
- Sturdy and powerful with compact design
- Depth of 700 mm means it will fit the most common configurations
- Catalogue offers more than 300 standard models
- Worktop, base cabinet, base cabinet with doors and oven versions
- Twin-piece knobs prevent the infiltration of dirt and are watertight
- Gas ranges having burners with various configurations and power ratings: 3,5 kW - 5,7 kW e 7 kW
- Wide range of accessories

The front bar is a new design feature that increases the kitchen's visual importance and offers clear benefits: it is a comfortable place for the chef to lean on; it means you will remain at a safe distance from the worktop and therefore protects from accidentally knocking against both items lying on the worktop and the knobs.



TECHNICAL DETAILS

ELECTRIC

SOFT IRON PLATE

ELECTRIC GRIDDLE WITH SMOOTH PLATE TOP VERSION

- Lowered griddle compared to the 4 cm top and tilted towards the machine front by 1 cm to drain the fat.
- Wide drawer for fat collection.
- Available with soft iron griddle or polished chrome griddle.
- Stainless steel high power armoured heating elements.
- Thermostatic safety control adjustable from 110°C to 280°C for all versions.

**ELECTRIC GRIDDLE WITH SMOOTH PLATE
TOP VERSION**

 CODE
CR1013989

 MODEL
Q70FT/E600

 SERIE
QUEEN 7

TECHNICAL INFORMATION

SPECIFICATIONS	DATA
CODE	CR1013989
DEFINITION	Q70FT/E600 FTE LISCIO M60 TOP
MODEL	Q70FT/E600
COMMERCIAL LINE	QUEEN
SUPPLY	ELETTRICA
WIDTH	600 MM
DEPTH	700 MM
HEIGHT	250 MM
NET WEIGHT	64,200
VOLUME	0,105 M3
PACKAGING LENGTH	800,000
PACKAGING WIDTH	440,000
PACKAGING HEIGHT	540,000
PACKAGING VOLUME	0,280
PACKAGING GROSS WEIGHT	68,800
POWER SUPPLY VOLTAGE STANDARD	380-415V 3N
FREQUENCY	50-60 Hz
ELECTRIC POWER	7,500 KW
IPX PROTECTION	IPX4
CERTIFIED MODEL	Q70FT/E600
IPX	X4
TYPE	A GIORNO
PRODUCT VARIANTS	PIASTRA RIGATA
NUMBER OF MODULES	1/1 MODULO

ELECTRIC GRIDDLE WITH SMOOTH PLATE TOP VERSION

CODE CR1013989	MODEL Q70FT/E600	SERIE QUEEN 7
-------------------	---------------------	------------------

ACCESSORIESES

CODE	MODEL	DESCRIPTION
CR0985219	70XFTP4	BACKSPALSH FOR FRY TOP M 400
CR0985229	70XFTP6	BACKSPALSH FOR FRY TOP M 600
CR0985239	70XFTP8	BACKSPALSH FOR FRY TOP M 800
CR1094610	70XFTP12	BACKSPALSH
CR1018819	QP14	PORTINA PER BASE L=200
CR1018829	QP13	PORTINA PER BASE L=300
CR1018839	QP12	PORTINA PER BASE L=400
CR1012109	QP15	DOOR L= 500
CR0985539	ZL70	INOX SIDE PLINTH 700 SERIE
CR0592770	ZA40	FRONT PLINTH
CR0985539	ZL70	INOX SIDE PLINTH 700 SERIE
MA97432000	NXR	CASTORS KIT
MA97433000	NXRI	CASTORS KIT
CR0990359	CH20	DIRECTABLE WATER FLUE
CR0980009	CANT	TUBULAR HANDRAIL FRONTALE (AL METRO LINEARE)
CR0980019	9CLAT	TUBULAR HANDRAIL LATERALE SERIE 900
CR0980029	18CLAT	DOUBLE SIDE TUBULAR HANDRAIL SERIE 900
CR1015229	Q70FTDX	END SIDE ELEMENT QUEEN7 - RIGHT
CR1015239	Q70FTSX	END SIDE ELEMENT QUEEN7 - RIGHT
CR1015249	Q70FT140	END SIDE ELEMENT QUEEN7 - PASSTROUGHT
BN418031900191	7PRD	PIANO LATERALE RIBALTABILE DESTRO
BN418031900440	7PFD	PIANO LATERALE FISSO DESTRO
BN418031900201	7PRS	PIANO LATERALE RIBALTABILE SINISTRO
BN418031900450	7PFS	PIANO LATERALE FISSO SINISTRO
BN418031900320	7TLD	TOP FINISHING END PIECE QUEEN7 - DX
BN418031900330	7TLS	TOP FINISHING END PIECE QUEEN7 - SX
BN418031900360	14TL	TOP FINISHING END PIECE QUEEN7 - PASS-TROUGHT
BN418031920420	FC2	REAR SPLASH-BACK (FALSE CHEMNEY)) L=20 cm
BN418031920430	FC4	REAR SPLASH-BACK (FALSE CHEMNEY)) L=40 cm
BN418031920490	FC6	REAR SPLASH-BACK (FALSE CHEMNEY)) L=60 cm
BN418031920440	FC8	REAR SPLASH-BACK (FALSE CHEMNEY)) L=80 cm
BN418031920450	FC10	REAR SPLASH-BACK (FALSE CHEMNEY)) L=100 cm
BN418031920460	FC12	REAR SPLASH-BACK (FALSE CHEMNEY)) L=120 cm
BN418031920470	FC16	REAR SPLASH-BACK (FALSE CHEMNEY)) L=160cm
BN418031920070	7RIP4	UNDERSHELF L=40 cm
BN418031920080	7RIP8	UNDERSHELF L=80 cm
BN418031920090	7RIP12	UNDERSHELF L=120 cm
BN418031920100	7RIP16	UNDERSHELF L=160 cm
BN418031920110		
BN418031920300		
BN418031920480		

**ELECTRIC GRIDDLE WITH SMOOTH PLATE
TOP VERSION**

CODE
CR1013989

MODEL
Q70FT/E600

SERIE
QUEEN 7

QUEEN

**PRODUCT'S
RANGE PLUS**



The plates tilt 10 mm towards the front of the appliance, optimising flow of fat into the drip drawer.



Plate welded to hob, thus guaranteeing a wider cooking zone and preventing the accumulation of dirt.



Equipment certified for low voltage directive 2014/35 / EU according to the international CB scheme.

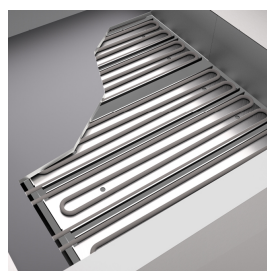
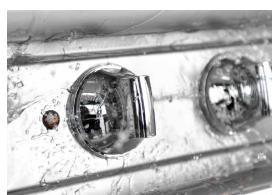


Plate with incoloy-sheathed heating elements placed on the underside in order to cook with a uniform temperature.



Thanks to the water jet ingress protection rating, awarded after passing specific tests, knobs and knob bezels can be washed at the end of the working day without affecting performance or safety.



Soft iron (extra-EU markets) griddle.



The front bar is a comfortable place for the chef to lean on; it means you will remain at a safe distance from the worktop and therefore protects from accidentally knocking against both items lying on the worktop and the knobs.

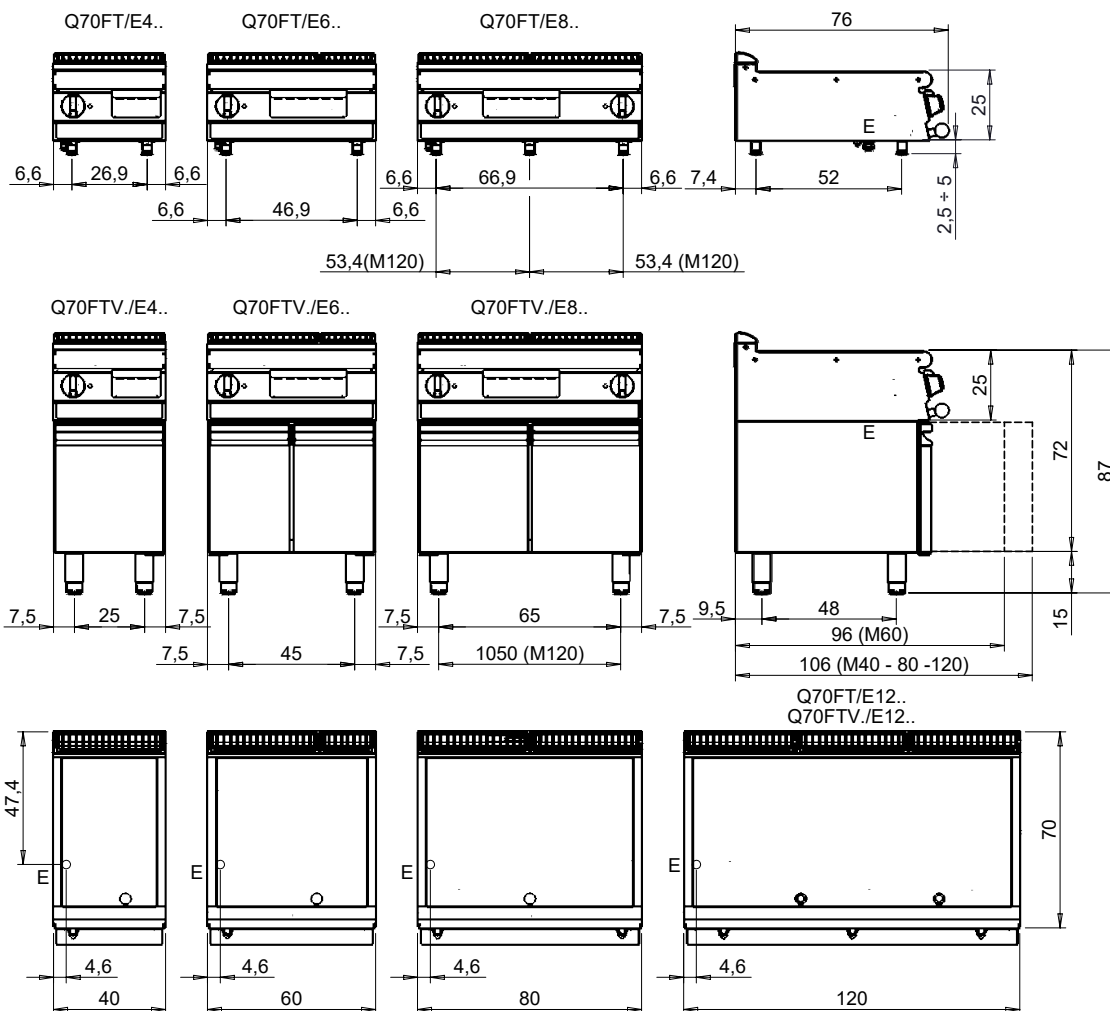
ELECTRIC GRIDDLE WITH SMOOTH PLATE TOP VERSION

CODE
CR1013989

MODEL
Q70FT/E600

SERIE
QUEEN 7

MISURE IN cm - DIMENSIONS IN cm - ABMESSUNGEN IN cm - MESURES EN cm
MEDIDAS EN cm - MATEN IN cm - DIMENSIONES EN cm



Legenda - Legende - Key - Légende - Leyenda - Legenda - Legenda

E Pressacavo entrata linea elettrica - Stopfbuchse - Electric cable stress relief - Presse étoupe de câble él - Pisacable - Elektrische kabelwartel - Entrada cabo eléctrico	G Arrivo gas - Gasanschluss - Gas connection - Arrivée gaz - Union de gas - Gasaansluiting - Ligação gás
S Attacco scarico acqua - Wasserablauf - Water outlet - Vidange de l'eau - Desaguadero - Wateraftapaansluiting - Junção descarga água	H20 Arrivo acqua - Wasseranschluss - Water inlet - Arrivée eau - Union de agua - Wateraansluiting - Junção alimentação água
S1 Scarico vasca - Wannenabflussrohr - Pan outlet - Vidange du bac - Descarga cuba - Water toevoer - Descarga da cuba	A1 = Calda - Heiss - Warm - Chaude - Caliente - Warm - Morno A2 = Fredda - Kalt - Cold - Froid - Fria - Koude - Frio
S2 Valvola di depressione - Anti-depression valve - Unterdruck ventil - Soupape de dépression - Válvula de depresión - Onderdrukklep - Válvula de depressão	L Rubinetto di livello - Level tap - Wasserhahn - Robinet de niveau - Grifo de nivel - Niveaakraan - Torneira de nível
S3 Scarico acqua intercapedine - Wasserablauf Zwischenraum - Jacket water drain Evacuation eau double envelope - Descarga de agua intersticios - Afvoer water tussenruimte - Descarga de água na marmitta com Sistema de aquecimento indirecto	
S4 Scarico - Abflussrohr - Drain - Tuyau d'évacuation - Tubo de drenaje - Aftapbuis - Tubulação de dreno	