

GAS GRIDDLE WITH SMOOTH PLATE TOP VERSION

Project:
Rev.:
Zone:
Location:



CODE
CR1013339

MODEL
Q70FT/G400

SERIE
QUEEN 7

GENERAL FEATURES

- 15/10 worktop thickness
- Stainless steel, Scotch-Brite finish
- Sturdy and powerful with compact design
- Depth of 700 mm means it will fit the most common configurations
- Catalogue offers more than 300 standard models
- Worktop, base cabinet, base cabinet with doors and oven versions
- Twin-piece knobs prevent the infiltration of dirt and are watertight
- Gas ranges having burners with various configurations and power ratings: 3,5 kW - 5,7 kW e 7 kW
- Wide range of accessories

The front bar is a new design feature that increases the kitchen's visual importance and offers clear benefits: it is a comfortable place for the chef to lean on; it means you will remain at a safe distance from the worktop and therefore protects from accidentally knocking against both items lying on the worktop and the knobs.



TECHNICAL DETAILS

GAS

SOFT IRON PLATE

GAS GRIDDLE WITH SMOOTH PLATE TOP VERSION

- Lowered griddle compared to the 4 cm top and tilted towards the machine front by 1 cm to drain the fat.
- Wide drawer for fat collection.
- Available with soft iron griddle or polished chrome griddle.
- Stable flame burners with piezo ignition.
- Independent controls every 40 cm wide module.
- Temperature adjustment from 200°C to 400°C with thermocouple safety valve.

GAS GRIDDLE WITH SMOOTH PLATE TOP VERSION

CODE
CR1013339

MODEL
Q70FT/G400

SERIE
QUEEN 7

TECHNICAL INFORMATION

SPECIFICATIONS	DATA
CODE	CR1013339
DEFINITION	Q70FT/G400 FTG LISCIO M40 TOP
MODEL	Q70FT/G400
COMMERCIAL LINE	QUEEN
SUPPLY	GAS
WIDTH	400 MM
DEPTH	700 MM
HEIGHT	250 MM
NET WEIGHT	33,000
VOLUME	0,070 M3
PACKAGING LENGTH	460,000
PACKAGING WIDTH	850,000
PACKAGING HEIGHT	570,000
PACKAGING VOLUME	0,223
PACKAGING GROSS WEIGHT	40,000
GAS TYPE	GPL 28-30/37 mbar
GAS POWER (G30/30 MBAR)	6,50 KW
GAS POWER (G25/25 MBAR)	6,25 KW
CERTIFIED MODEL	Q70FT/G400
CERTIFICATION NUMBER	CE-0085BU0308
POT GAS TOT / POT FRIGO2	6,50
CERTIFICATION	0085BU0308
CERTIFICATION BODY	0085
TYPE	A GIORNO
PRODUCT VARIANTS	PIASTRA LISCIA
NUMBER OF MODULES	1/2 MODULO

GAS GRIDDLE WITH SMOOTH PLATE TOP VERSION

CODE CR1013339	MODEL Q70FT/G400	SERIE QUEEN 7
-------------------	---------------------	------------------

ACCESSORIESES

CODE	MODEL	DESCRIPTION
CR0985219	70XFTP4	BACKSPALSH FOR FRY TOP M 400
CR0985229	70XFTP6	BACKSPALSH FOR FRY TOP M 600
CR0985239	70XFTP8	BACKSPALSH FOR FRY TOP M 800
CR1094610	70XFTP12	BACKSPALSH
CR1018819	QP14	PORTINA PER BASE L=200
CR1018829	QP13	PORTINA PER BASE L=300
CR1018839	QP12	PORTINA PER BASE L=400
CR1012109	QP15	DOOR L= 500
CR0985539	ZL70	INOX SIDE PLINTH 700 SERIE
CR0592770	ZA40	FRONT PLINTH
CR0985539	ZL70	INOX SIDE PLINTH 700 SERIE
MA97432000	NXR	CASTORS KIT
MA97433000	NXRI	CASTORS KIT
CR0990359	CH20	DIRECTABLE WATER FLUE
CR0980009	CANT	TUBULAR HANDRAIL FRONTALE (AL METRO LINEARE)
CR0980019	9CLAT	TUBULAR HANDRAIL LATERALE SERIE 900
CR0980029	18CLAT	DOUBLE SIDE TUBULAR HANDRAIL SERIE 900
CR1015229	Q70FTDX	END SIDE ELEMENT QUEEN7 - RIGHT
CR1015239	Q70FTSX	END SIDE ELEMENT QUEEN7 - RIGHT
CR1015249	Q70FT140	END SIDE ELEMENT QUEEN7 - PASSTROUGHT
BN418031900191	7PRD	PIANO LATERALE RIBALTABILE DESTRO
BN418031900440	7PFD	PIANO LATERALE FISSO DESTRO
BN418031900201	7PRS	PIANO LATERALE RIBALTABILE SINISTRO
BN418031900450	7PFS	PIANO LATERALE FISSO SINISTRO
BN418031900320	7TLD	TOP FINISHING END PIECE QUEEN7 - DX
BN418031900330	7TLS	TOP FINISHING END PIECE QUEEN7 - SX
BN418031900360	14TL	TOP FINISHING END PIECE QUEEN7 - PASS-TROUGHT
BN418031920420	FC2	REAR SPLASH-BACK (FALSE CHEMNEY)) L=20 cm
BN418031920430	FC4	REAR SPLASH-BACK (FALSE CHEMNEY)) L=40 cm
BN418031920490	FC6	REAR SPLASH-BACK (FALSE CHEMNEY)) L=60 cm
BN418031920440	FC8	REAR SPLASH-BACK (FALSE CHEMNEY)) L=80 cm
BN418031920450	FC10	REAR SPLASH-BACK (FALSE CHEMNEY)) L=100 cm
BN418031920460	FC12	REAR SPLASH-BACK (FALSE CHEMNEY)) L=120 cm
BN418031920470	FC16	REAR SPLASH-BACK (FALSE CHEMNEY)) L=160cm
BN418031920070	7RIP4	UNDERSHELF L=40 cm
BN418031920080	7RIP8	UNDERSHELF L=80 cm
BN418031920090	7RIP12	UNDERSHELF L=120 cm
BN418031920100	7RIP16	UNDERSHELF L=160 cm
BN418031920110		
BN418031920300		
BN418031920480		

GAS GRIDDLE WITH SMOOTH PLATE TOP VERSION

CODE
CR1013339

MODEL
Q70FT/G400

SERIE
QUEEN 7

QUEEN

PRODUCT'S RANGE PLUS



The plates tilt 10 mm towards the front of the appliance, optimising flow of fat into the drip drawer.



Plate welded to hob, thus guaranteeing a wider cooking zone and preventing the accumulation of dirt.

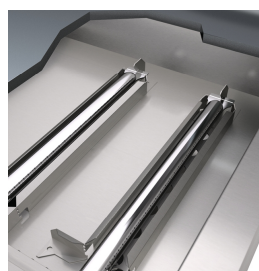
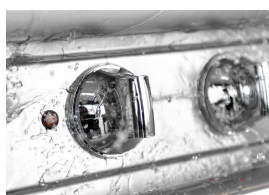


Plate with incoloy-sheathed heating elements placed on the underside in order to cook with a uniform temperature.



Thanks to the water jet ingress protection rating, awarded after passing specific tests, knobs and knob bezels can be washed at the end of the working day without affecting performance or safety.

**SOFT
IRON
PLATE**

Soft iron (extra-EU markets) griddle.



The front bar is a comfortable place for the chef to lean on; it means you will remain at a safe distance from the worktop and therefore protects from accidentally knocking against both items lying on the worktop and the knobs.

**TEMPERATURE
RANGE
200 °C / 400 °C**

Temperature adjustment from 200°C to 400°C

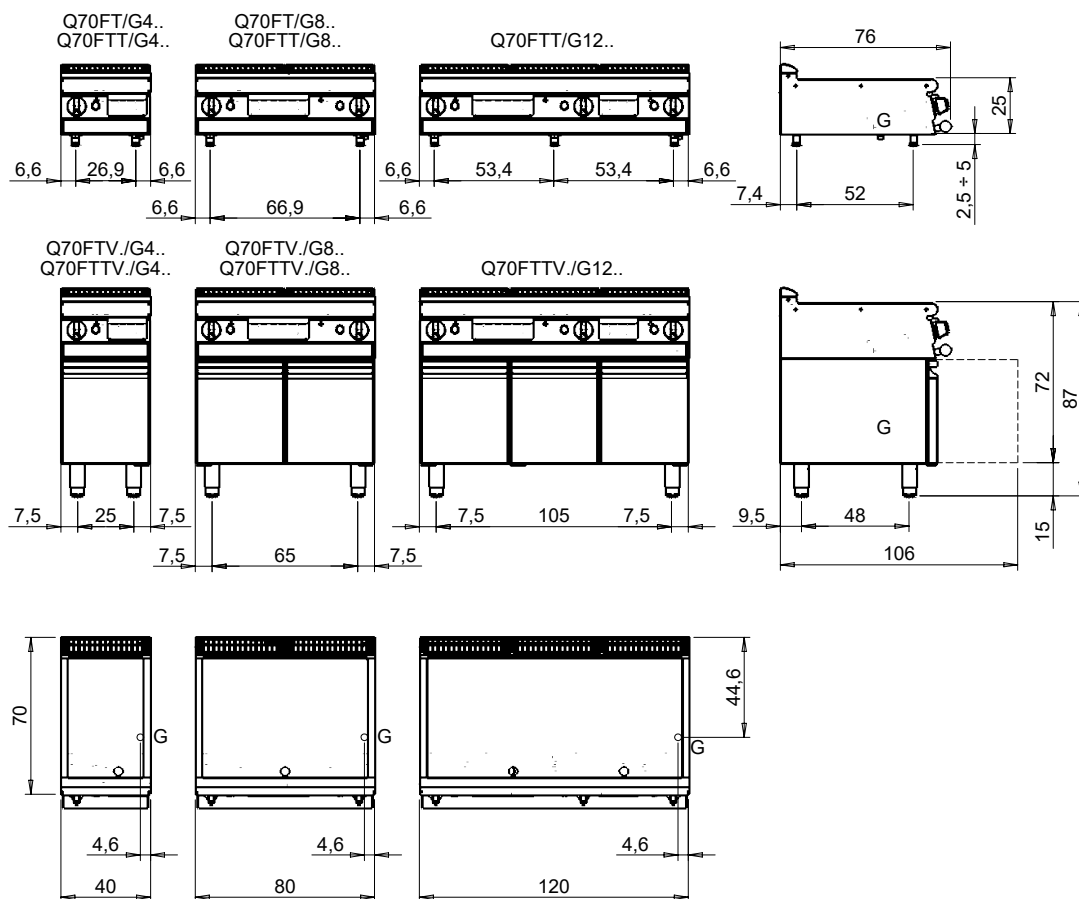
GAS GRIDDLE WITH SMOOTH PLATE TOP VERSION

CODE
CR1013339

MODEL
Q70FT/G400

SERIE
QUEEN 7

MISURE IN cm - DIMENSIONS IN cm - ABMESSUNGEN IN cm - MESURES EN cm
MEDIDAS EN cm - MATEN IN cm - DIMENSIONES EN cm



Legenda - Legende - Key - Légende - Leyenda - Legenda - Legenda

<p>E Pressacavo entrata linea elettrica - Stopfbuchse - Electric cable stress relief - Presse étoupe de câble él - Pisacable - Elektrische kabelwartel - Entrada cabo eléctrico</p>	<p>G Arrivo gas - Gasanschluss - Gas connection - Arrivée gaz - Union de gas - Gasaansluiting - Ligaçao gás EN 10226-1 R 1/2; EN ISO 228-1 G 1/2 (DK)</p>
<p>S Attacco scarico acqua - Wasserablauf - Water outlet - Vidange de l'eau - Desaguadero - Wateraftapaansluiting - Junção descarga água</p>	<p>H20 Arrivo acqua - Wasseranschluss - Water inlet - Arrivée eau - Union de agua - Wateraansluiting - Junção alimentação água</p>
<p>S1 Scarico vasca - Wannenabflussrohr - Pan outlet - Vidange du bac - Descarga cuba - Water toevoer - Descarga da cuba</p>	<p>A1 = Calda - Heiss - Warm - Chaude - Caliente - Warm - Morno A2 = Fredda - Kalt - Cold - Froid - Fria - Koude - Frio</p>
<p>S2 Valvola di depressione - Anti-depression valve - Unterdruck ventil - Soupape de dépression - Válvula de depresión - Onderdrukklep - Válvula de depressão</p>	<p>L Rubinetto di livello - Level tap - Wasserhahn - Robinet de niveau - Grifo de nivel - Niveaakraan - Torneira de nível</p>
<p>S3 Scarico acqua intercapedine - Wasserablauf Zwischenraum - Jacket water drain Evacuation eau double envelope - Descarga de agua intersticios - Afvoer water tussenruimte - Descarga de água na marmitta com Sistema de aquecimento indirecto</p>	
<p>S4 Scarico - Abflussrohr - Drain - Tuyau d'évacuation - Tubo de drenaje - Aftapbuis - Tubulação de dreno</p>	